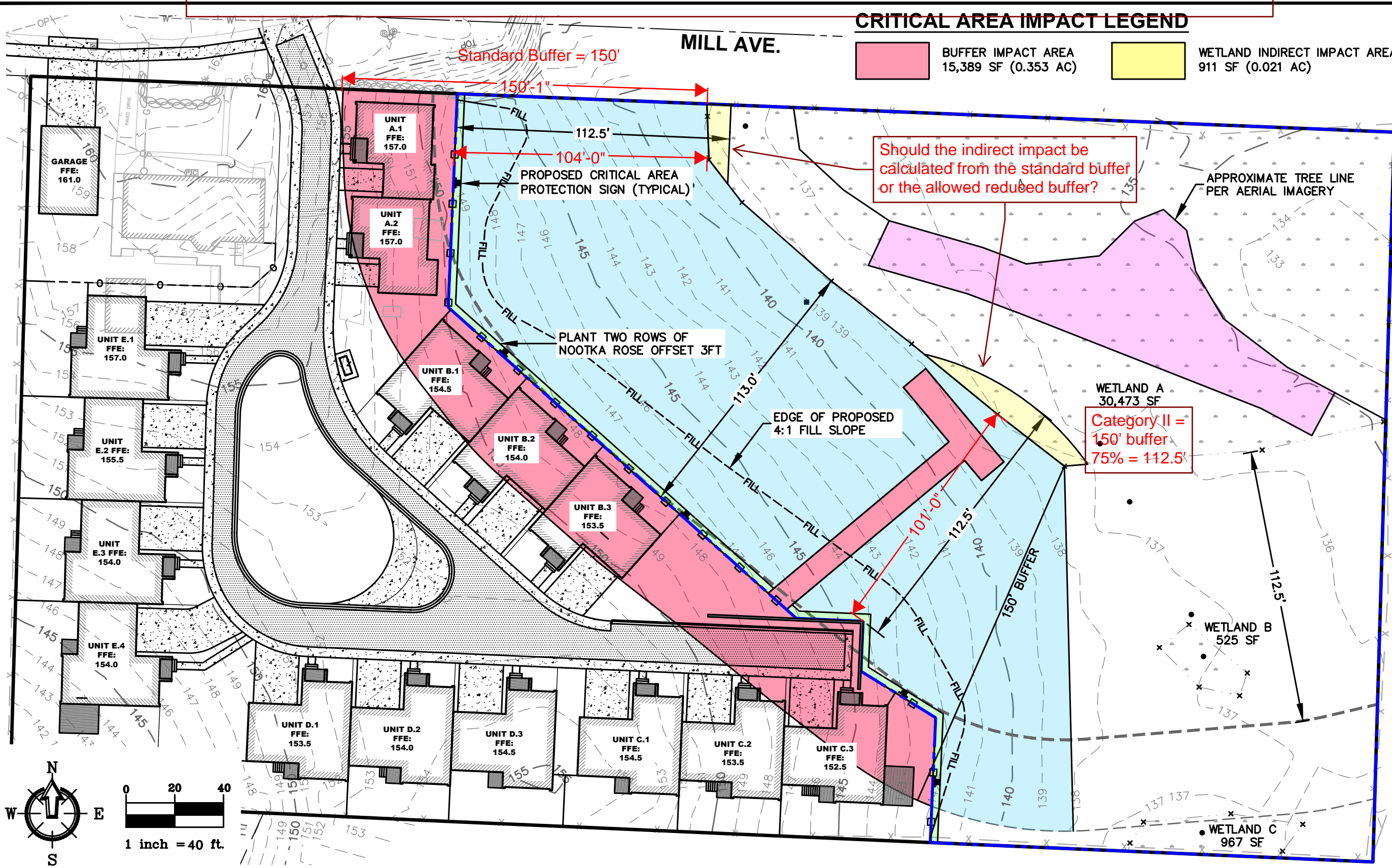


COB 16.55.340 allows standard buffer to be reduced 25%. This project is proposing greater buffer reductions by compensating for "indirect impacts".

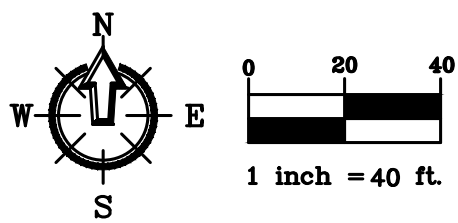
CRITICAL AREA IMPACT LEGEND

- BUFFER IMPACT AREA
15,389 SF (0.353 AC)
- WETLAND INDIRECT IMPACT AREA
911 SF (0.021 AC)



CRITICAL AREA MITIGATION LEGEND

- BUFFER ENHANCEMENT AREA
34,231 SF (0.786 AC)
- WETLAND ENHANCEMENT AREA
5,500 SF (0.126 AC)
- NOOTKA ROSE BARRIER – TWO OFFSET ROWS OF NOOTKA ROSE WITH 3FT SPACING
- = CONSERVATION EASEMENT
- = PROPOSED SPLIT RAIL FENCE
- = PROPOSED CRITICAL AREA PROTECTION SIGN



DATE	FEBRUARY 2025	SHEET NAME	WT1
JOB #	22275	DRAWING #	22275SP15.DWG

MILL AVENUE IMPACT & MITIGATION MAP

SHEET CONTENTS
 t: 360.650.1408
 f: 360.650.1401
F R E E L A N D
 & A S S O C I A T E S
 2500 Elm Street, Suite 1
 Bellingham, WA 98225